

# SoLink<sup>®</sup> IP-PBX Appliance

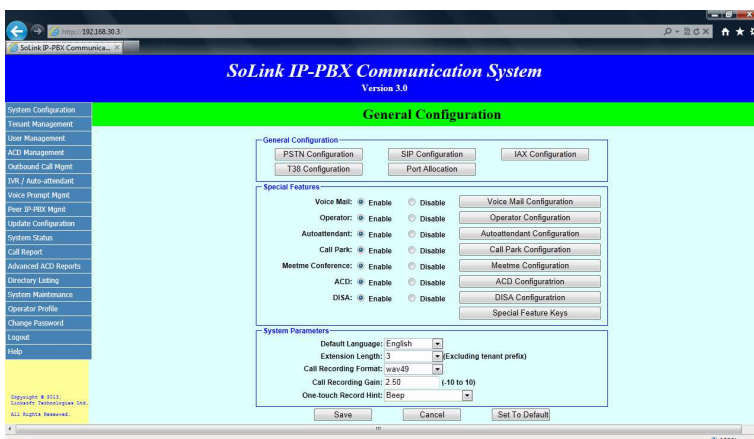
SoLink IP-PBX Appliance is a low power, high performance, embedded IP-PBX solution, supporting up to 16 analog FXO/FXS telephone ports or 2 T1/E1 ISDN PRI ports. It is built upon a compact, rack-mountable 1U server hardware with redundant hard disks, quality voice cards with optional hardware echo-cancellers, together with the full-featured multi-tenant enabled SoLink IP-PBX software. This makes it ideal for SMB (small and medium business) or branch office uses.

SoLink IP-PBX Appliance provides you with a business-class IP-PBX system with advanced features such as multi-tenant support, voicemail-to-email, fax-to-email, automatic call distribution (ACD) with skills-based routing, call recording, conference bridge and peer IP-PBX support that are only available to high-end PBX.



## BENEFITS

- offer a compact, low-power, high-performance IP-PBX solution for small and medium business, SOHO, or branch office uses.
- support up to 300 extensions, 180 concurrent calls using G.711 codec, 80 concurrent calls with G.729 codec transcoding
- provide industry-leading 30-month limited warranty
- offer advance features such as multi-tenant support with billing, voicemail-to-email, fax-to-email, ACD, IVRS, conference bridge, call recordings that are only available to high-end PBX but at a lower cost
- based on standard-based technologies (i.e. SIP, G.711, etc) and open-source platforms such as Linux and Asterisk. This means no more lock-in to a single vendor.
- free intra-network calling among geographically dispersed offices (eliminate long-distance charge)
- single network infrastructure for both voice and data communication, thus resulting in cost savings in installation, configuration, and management
- enable mobile workforce and remote staff to connect to the PBX seamlessly as if they are in the office
- easier to expand (no hardware upgrade required for adding extensions)



## FEATURES

### Call Features

- multi-tenant support
- multiple language support
- automated attendant
- primary and backup operators
- public or private extensions with coverage path support
- multiple SIP accounts per extension
- call group (or extension group) with group mailbox and monitoring
- voice/fax mail with email message notification
- call transfer / forward
- call group pickup
- extension pickup
- call parking
- blacklist caller support
- intercom and paging
- DISA
- web call-back
- music on hold
- three-way calling
- conference bridge with optional call recording and video support
- automatic call distribution (ACD) with skills-based routing, supervisor monitoring, and call recording
- optional call recording by extension
- do not disturb (DND)
- outbound extension
- directory listing
- outbound calling via PSTN or VoIP
- dynamic call routing

### Call Features (Cont'd)

- multiple user call privileges
- IVR support
- Fax to email support
- T.38 IP Fax
- SRTP encryption support
- Secure SIP signaling support
- peer IP-PBX support
- call details records
- web-based configuration, administration, and reporting
- web-based voice/fax mail, send fax (PDF only) and user option access
- web-based conference bridge control panel

### Billing Features

- optional plan-based subscription per tenant account
- monthly and/or annual billing with auto-renewal support
- Paypal support with multiple currencies

### Telephony Interoperability

- FXS / FXO Loop-start

### PRI Protocol

- 4ESS, DMS100, EuroISDN, Lucent 5ESS, National ISDN2

### VoIP Protocol

- SIP (Session Initiation Protocol) via UDP, TCP, and TLS
- IAX™ (Inter-Asterisk Exchange)

### Codecs

- G.711, G.726, G.722 wideband, GSM, G.729 (optional), G.723.1 (pass through only)
- H.264, H.263, MPEG video

### Hardware

- Intel Dual-Core Atom 1.8GHz processor (max 13W)
- 2GB memory
- dual gigabit Ethernet ports
- power supply with PFC (power factor correction)
- 2 x 128GB SSD (RAID 1 mirroring)

### Interface

- Power Connector
- 2 x RJ45 Port
- 4 x USB Port (2 front, 2 back)
- 1 x VGA port
- PS/2 keyboard and mouse ports
- 1 x RS232 serial port

### Dimensions

- chassis: 430Wx44Hx250D mm
- package: 555Wx135Hx375D mm
- weight: about 8 KG

### Compliance

- Server (FCC Class B, RoHS)
- Voice Card (FCC, CE, RoHS)

### Capacity

- up to 300 extensions (software upgradeable)
- 180 concurrent calls using G.711 without recording, 50 with recordings
- 80 concurrent calls with G.729 transcoding without recording; 40 with recordings
- about 17,000 hours of call recording / voicemail using wav49 format; about 1,700 hours using wav format

### Warranty

- 30-month limited warranty

## ABOUT LINKSOFT TECHNOLOGIES LTD

Linksoft Technologies Ltd. is a Hong Kong based corporation specialized in providing telecom solutions to service providers and enterprises. Our primary business includes voice-over-IP (VoIP) products such as H.323 Gatekeeper, Gateway, and IP-PBX, as well as providing customized software development and system integration services to our clients.

### Linksoft Technologies Ltd

Tel: +852 3405 8729

Fax: +852 2508 1203

[sales@linksoft.com.hk](mailto:sales@linksoft.com.hk)

<http://www.linksoft.com.hk>